



WB 10 RID 310 Tube Kit Assembly Instructions

RID PVC Kit # 5001010006

RID HYP Kit # 5002010012 Instruction Book Part #1000130060 Rev 2 S.R. 22.05.13



PARTS LIST

(Specifications and contents subject to change without notice)

Description	Part #
A. WB 10 RID Tube 310	#3001020340
A. Pump	#3001020337
A. Repair Kit (with valve wrench)	#1000330002
	#3000030061

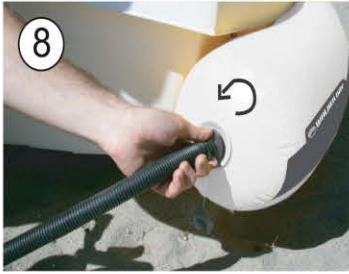
TOOLS REQUIRED FOR ASSEMBLY

- A. #2 Phillips Screw Driver

Walker Bay Boats LLC.

web: www.walkerbay.com email: info@walkerbay.com

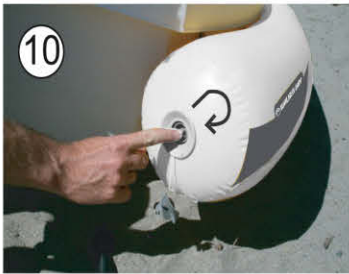
Remove the pump hose and nozzle by turning the nozzle counter clockwise and pulling the nozzle out.



Seal the valve with the valve cap by pushing the valve cap in and turning it clockwise.



To deflate the tube remove the valve cap, push the valve button in and turn clockwise so it locks in the IN position.



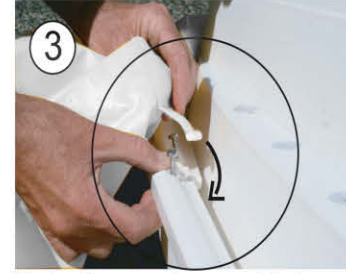
Turn the boat upside down and unscrew all the gunwale caps.

Note: Be careful not to lose any of the screws, you will need them to reinstall the gunwale caps.

Lay the deflated tube around the boat.
Note: Make sure the tube is the right way around. Logos can be used to find direction for tube.

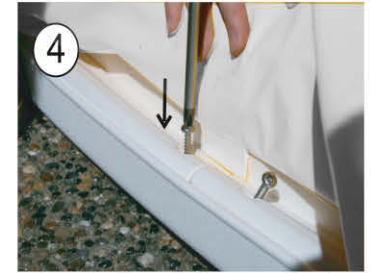


Starting at the bow/front of the boat replace the gunwale cap with the sections of bolt rope on the tube between the gunwale caps and the hull.



Fasten the gunwale cap and bolt rope in place by screwing the gunwale cap screws into their original positions.

Caution: Do not overtighten the screws. Overtightening the screws may strip the plastic of the hull.



Repeat this process from the bow/front to the stern/rear of the boat on both sides of the boat. Pulling back tube as you go.





Finish with the rear gunwale caps.

Note: Before inflating the tube check that all gunwale caps, sections of tube bolt rope and screws are securely in place.



To inflate the tube flip the boat into the upright position.

The valve has two positions, IN and OUT. To change positions push and turn the spring loaded button in the valve. For inflating the tube the valve must be in the OUT position to prevent air from escaping from the tube.



Inflate the tube using the hand or foot pump provided. To inflate the tube insert the nozzle on the pump's hose into the valve and turn it clockwise to lock it in place.



Inflate the tube to the correct working pressure of 3PSI.

Caution: Do not over or underinflate the tube by more than 0.5 PSI. Underinflating the tube can lead to poor performance. Overinflating the tube could damage the tube.



STORAGE & MAINTENANCE

For longterm or winter storage you may remove the tube.

If you store the boat with the tube attached release some air pressure as the air inside the tube expands and contracts with temperature change.

Rinse boat with mild soap and fresh water after use. Rinse away sand or debris.

Dry boat before storing to prevent accumulation of mould.

Store boat in a cool and dry place.

Apply 303 Aerospace Protectant at least once per season to protect tube from UV (ultra violet) rays. 303 leaves a like-new, non-oily, anti-static finish that does not attract dust and can be purchased through the manufacturer's website: www.303products.com

VALVES - Tighten air valves several times per season. Loose valves may result in air leaks or loss of pressure in the tube. Tighten valves with the tool provided in the repair kit. **DO NOT OVERTIGHTEN VALVES.**

⚠ CAUTION

Avoid storing boat in water when not in use to prevent contact with hazardous chemicals due to pollution, abrasion from foreign objects and accumulation of marine growth.

Use a boat cover or storage bag. Avoid unnecessary prolonged exposure of the tubes to direct sunlight. If a cover is not provided with your boat, accessory covers are available. For information contact Walker Bay® customer service.

Avoid storing boat where rodents may have access to it, they can chew through the tube's fabric creating a leak.

Do not clean with oily or abrasive substances.

Do not clean with products that contain: phosphates, chlorine, solvents, non-biodegradable or petroleum based products.

Do not use Armor All® automotive cleaning agent and preservative on tube.

Read labels and instructions carefully to avoid products that could be harmful to polypropylene, PVC or other plastics.

Use only diluted citrus-based cleaners. They are excellent for marine cleaning purposes, and safe to use. Full strength citrus-based cleaners can discolor PVC.

Use household cleaners sparingly and do not discharge them into waterways.

Avoid contact of the tubes' fabric with hazardous or harmful materials such as: battery acid, oil, gasoline, vinyl preserving agents, or alcohol based cleaning solutions, waxes, or solvents.

Avoid contact of sharp or abrasive objects with the tube. They can puncture the tube.

Do not mix cleaners and work in a well ventilated area.

TUBE REPAIRS

For repairs, parts, or service contact your local dealer or Walker Bay® customer service at info@walkerbay.com

SMALL TEARS - CUTS - PUNCTURES

Tears, leaks, or punctures less than 0.5 inch or 1cm can be repaired with the repair kit provided.

1. Prepare a round patch no less than 3 inches or 7 centimeters in diameter.
2. Clean the patch and the area surrounding the leak with Isopropyl Alcohol. **IMPORTANT:** patch and tube must be clean or the patch may not adhere properly.
3. To contain excess glue, use masking tape to tape off the area around the patch. Excess glue will discolor.
4. Apply 3 thin, even coats of repair kit adhesive to both the surface of the tube and the patch. Wait 5 minutes between each coat.
5. After the 3rd coat, wait 10-15 minutes before applying the patch. Use a hand roller to apply the patch evenly. Pay special attention to the edges.
6. Wait 24 hours before re-inflating tube. Inflate air chamber(s) to working pressure and check water-tightness and/or air-tightness before using.

FINDING SMALL LEAKS

1. Mix a solution of 4 cups of fresh water and 1 cup of mild non-anti-bacterial liquid soap. Do not use a spray bottle containing any household cleaners.
2. Inflate tube approximately to working pressure.
3. Spray the soapy solution over suspected area of leak.
4. Look for air bubbles. Bubbles around an air valve indicate it is probably loose. Use the tool included in the repair kit and gently tighten valve. Bubbles on the surface of the tube indicate a puncture or leak.
5. Repair the tube by following the procedure for SMALL TEARS - CUTS - PUNCTURES or contact Walker Bay® customer service for Return Authorization, Repair Service and Freight Rates.

LARGE REPAIRS TO SKIN - SEAMS

⚠ CAUTION

For large tears or repairs to seams or bulkheads it is recommended that the tube be returned to Walker Bay® or your dealer for repair by a trained professional. Contact Walker Bay® customer service for return authorization, Repair Service and Freight Rates.